

ABDULLAH
KHAN
ARCHITECTS

COMPANY PROFILE





Mobile: +92 308 8880161

Email: abdullah@ak-architects.com

Website: www.ak-architects.com

Instagram: [ak_architects](https://www.instagram.com/ak_architects)

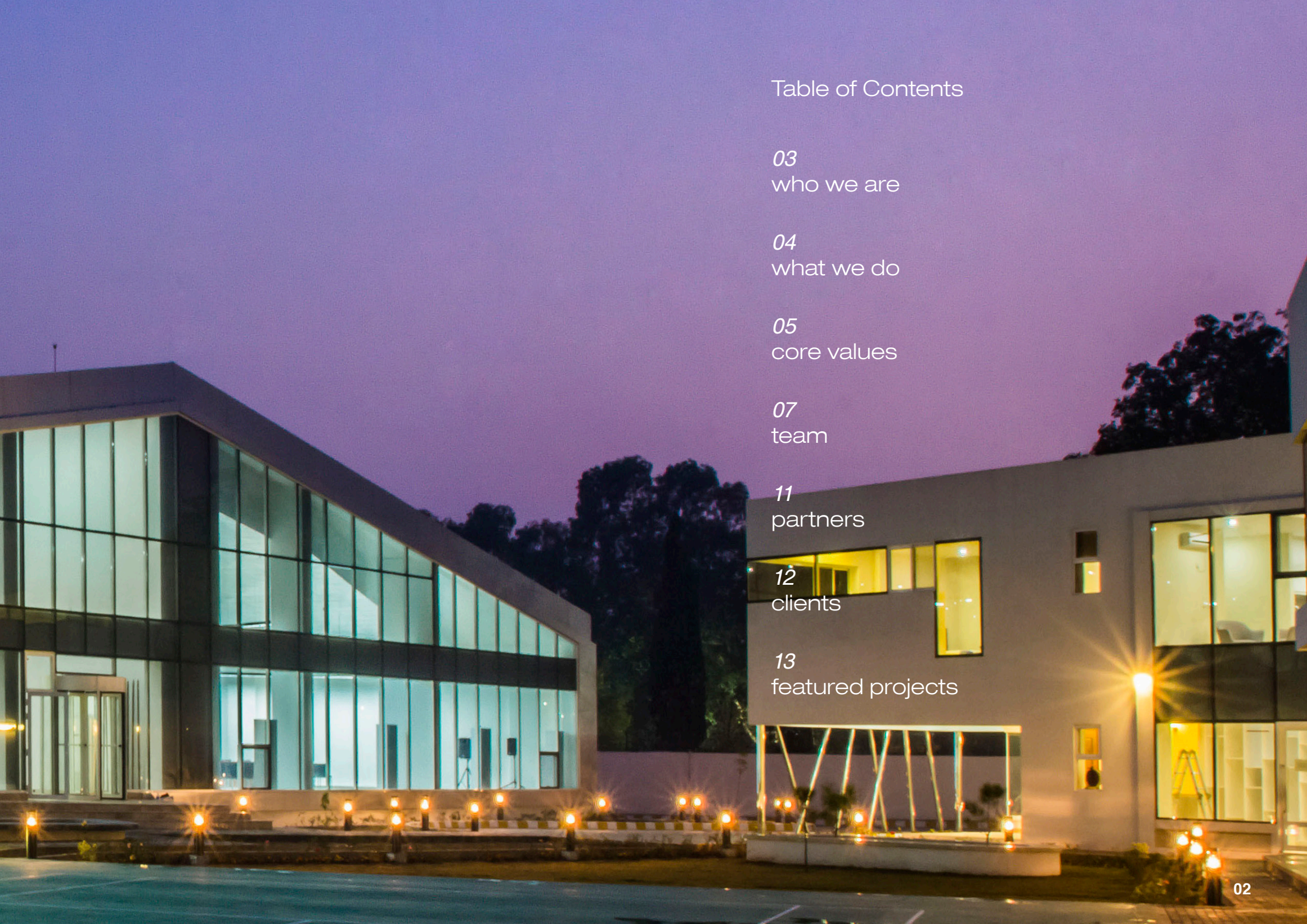


Table of Contents

03
who we are

04
what we do

05
core values

07
team

11
partners

12
clients

13
featured projects



Who We Are

Abdullah Khan Architects is an international award winning architecture and interior design consultancy based in Islamabad. Our design methodology is underpinned by contextual research and tailored to suit client requirements. Driven by a team of committed professionals, our vision is based on designing and building for tomorrow yet focused on the challenges of today. AKA is a design oriented architecture firm that is committed to excellence in custom architecture and design for residential, commercial, corporate and healthcare projects. We combine thoughtful design with construction management experience; a winning combination that leads to a distinctive design process resulting in intellectually rigorous as well as financially informed results.

What We Do



Architecture
Design



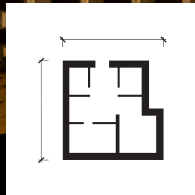
Landscape



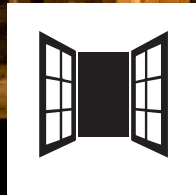
Project
Management



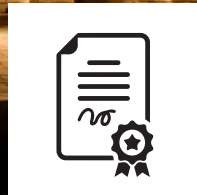
Renovation
and Adaptive
reuse



Master
Planning



Interior Fit-out



Contract
Management

Core Values

Our core values lie at the heart of what we do as part of our practice management. It defines our way of work and constitutes the guiding principles of our approach and outcomes towards architectural solutions in general and the building construction industry in specific.

01 *One team strategy*

Working closely with all project stakeholders increases the effectiveness of communication and productivity. Our collaborations and partnerships extend beyond the studio. We respect the shared pool of knowledge that our team of designers, engineers, manufacturers, suppliers and vendors bring to the table which encourages team work on a multi-disciplinary level.

03 *Sustainability*

At AKA, we believe in also improving our environmental footprint rather than only reducing it. We use a combination of regionally rooted sustainable initiatives and international green building practice guidelines. Our in-house LEED accredited professional is qualified to register your project with the US Green Building Council for accreditation and a green rating.

02 *Design Responsiveness*

Our pre-contract services determine facts beyond client brief and budget, which along with client inputs, drives our design approach towards complex projects. The reason why our design solutions are unique and vary project wise is a combination of custom made precontract services and site derivatives that guide our design.

04 *Design Intelligence*

No project design is complete without going through detailed reviews of building standards and client customization. Our R&D team is always on the lookout for innovation in architectural solutions. We apply a 3-point review strategy where every design is tested by project leaders, industry professionals and best practice standard guidelines before the design graduates from the drawing board.



Team



Abdullah Khan
Principal Architect

Abdullah Khan, the Principal Architect and Founding Director, established AKA in 2011 after having worked as an Architect in Dubai, Abu Dhabi, Bahrain, Karachi and Lahore on key, hospitality, mixed use, residential, institutional and commercial projects. He is a LEED accredited professional since 2009 and an NCA Lahore Distinction graduate, batch of 2004.

Abdullah's design philosophy outlines the use of sustainable strategies to deliver intelligent and efficient projects. His demonstrated problem-solving skills, client communication, and extensive project development experience make him a top choice for complex projects.

Abdullah's mission is to help clients maximize the value of their financial and facility assets when approaching projects. He has a holistic approach to projects, beginning with the implementation of workplace strategy reflective of client's business objective, and ending with the project's measure of success.

Abdullah plays a pivotal role in personally overseeing projects from concept development to practical completion and beyond.

Team



Sumaira Mehmood

Architect



Laraib Zaigham

Architect



Gulandama Khan

Architect



Imran Sohail

CAD Manager



M. Gulbaz

Quantity Surveyor



Khurram Goraya

IT Specialist



Imran Anwar

Maintenance



Waqar Ahmed

Project Professional



Usman Khan

Site Supervisor



Fawad Anwar

IT Specialist



Azizullah Khan

Maintenance

Partners

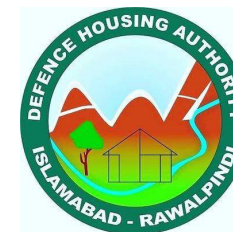


Bluehaus Group



AsCE Pvt Ltd

Clients



Embassy of the Philippines, Islamabad

*Architecture & Interior
- Institutional*



AKA had been successfully selected through a limited design competition as the lead consultant for design and contract administration for the Embassy. The development comprises of a chancery, ambassador's residence, recreational area and staff accommodation.

The Chancery:

The chancery is a basement + 2 level office building designed to fulfill the functions of consular, diplomatic relations, trade commissioner, attache's, administration and the ambassadorial secretariat. The building is equipped with a cafeteria, basement parking and library . A concrete façade on the south side allows privacy and sunshading while the north façade consisting of a large glass curtain wall opens up to the courtyard that is divided by a landscaped spine from the chancery. The chancery has been designed to constantly orient the user by providing a double height atrium lobby lined with a magnificent skylight. The skylight negates the use of artificial ambient lighting

during daylight hours. The office building has been designed in compliance with NFPA 101 for emergency evacuation and fire suppression standards. All major escape stairways open up to assembly areas that lead emergency evacuation and fire suppression standards. All major escape stairways open up to assembly areas that lead out of the development site.

The Ambassador's Residence

The residence is designed to act as a getaway despite its close proximity to the chancery. We chose the landscaped spine to bisect the work and play areas. The residence is a contemporary living space with layered functions. The ground layer is a formal living space to entertain state guests and delegates. The first floor is an open plan family area with bedrooms for the children.



Banigala Residence, Islamabad

Architecture & Interior - Residential

This family residence is inspired by the adventurous lifestyle of the client who is a keen traveller, with specific interests in hiking, hunting & offroading. The residence was designed to reflect an outdoors lifestyle surrounded by nature yet enjoying the amenities and comforts of a city home.



Orchard Scheme, Islamabad

Architecture & Interior *- Residential*

The orchard villa sits on a 50 kanal plot complete with its own citrus orchards and dairy farm. The design aesthetic is based on the western classical idea of proportion and symmetry as is evident in the form of the building. The villa comes complete with 5 bedrooms, independent entertainment areas and a covered swimming pool with sauna and steam.



Regionalist, Residence Charsadda

Architecture & Interior *- Residential*

Featuring a 5 bedroom regionalist residence at Nisatta Road, Charsadda, the project attempts to evoke nostalgia by the use of traditional local brick & lattice work. It features pointed arches and screens made from locally sourced bricks and welcomes you into a foyer that wraps around an old tree to create harmony between the built and natural spaces.





Alpine House, Dunga-Gali

Architecture & Interior *- Residential*

A vacation home for a young couple conceived as an alpine getaway complete with all the comforts of a modern home. The residence has 4x bedrooms and 2x lounges for the main house with a sizeable lawn and covered verandahs overlooking the famous pipeline route to Ayubia.

The residence is designed to resolve a 60 degree slope with roads on either ends. The lower road accesses the annexe with a car porch and 1 bed apartment, whereas the upper road provides access to the main house.





Aura Square, Islamabad

Architecture & Interior *- Commercial*

F-11 is one of the most densely populated residential area of Islamabad with an increased acceptance of the apartment life style. F-11 comprises of executive apartments, malls and houses belonging to the upper class. The newly designed F-11 markaz holds high end facilities for its visitors and has attracted top corporates, multinationals as well as famous brands, outlets and franchises.

The plaza is a commercial retail and corporate building. It covers an area of 2.5 kanals, located on the corner of Hilal and Sumbal road. It provides easy access and clear view to the visitors and apartments.

There are five floors with an accumulative area of 63,927 sqft. The lower ground, ground and first floor are designated for retail while the offices are on the 2nd and 3rd floor.





Florence Events Adiala Road, Rawalpindi

Architecture & Interior -Public Use

An event space in the heart of Rawalpindi with the capacity to accommodate 1000 guests in an airconditioned environment with options of open lawns to host events for upto an additional 500 persons. Florence Events has a total plot area of 75,529 sft with 120 parking slots and future expansion of upto 2 more indoor airconditioned space with potential total capacity of 3000x persons. The design was inspired by timeless western classical architecture elements that make the ideal background for making memories.



The Elite Club - Gujrat

Architecture & Interior *- Public Use*

Featuring an event space, parking and landscape areas that mark the completion of phase 1 of the Elite Club in Gujrat. Phase 2 includes a Hotel, business centre, shopping arena and restaurants covering a cumulative total of around 200,000 sft of public use.

The Elite Club breaks away from the conventional design of an event space to adopt a contemporary and flexible design. The grand reception opens up big views to the landscape surrounding the marquee and illuminates the interior with natural light.



Muslim Youth University, Islamabad

Architecture & Interior *- Educational*

Nestled between the undulating terrain of Potohar region, adjacent to the Islamabad expressway, the site features 116 kanals of untouched land to be developed as the new campus of MYU. The current program is the main engineering building and master planning of the site.

Presently the university is operating out of a commercial rented property in central Islamabad. The vision of the university is based on long term service to the education sector along with ensuring equitable quality education that enables the growth of leading research.

The main building is based on climate responsive architecture and fulfills the requirement of various engineering departments. The form puts emphasis on fluidity and dynamism by reacting to the natural site context of the contoured terrain of the Potohar region.





All corridors are naturally ventilated to reduce cooling loads by taking advantage of the prevailing winds. Slab edges are sheltered from heat gain by introducing concrete shading devices that help achieve thermal comfort in the habitable spaces.

The building provides state-of-the-art venue for the many activities- it has 13 classrooms, 2 lecture theaters, 18 labs to fulfill the requirements of structural, mechanical and computer science departments, 20,000 square feet area dedicated for faculty wing and a roof top communal space with amphitheater.

Farmhouse, Gulberg Greens Islamabad

*- Architecture & Interior
Residential*

A 6000 square foot residence that was built to function as a duplex featuring a total of 10 bedrooms, 2 lounges and 2 formal living spaces. The façade has a simple design language, whereas the interior features large windows and skylights to allow as much natural light into the space as possible. Giving a feeling of large spaces that connects you with the natural landscaping outside.





DHA Residence, Islamabad

*Architecture, Interior
-Residential*

A 2 kanal residence in DHA 2, Islamabad that features a double height central living room, luxury multi media room, full gym and entertainment area along with basic amenities and 8 bedrooms





Dr. M Farmhouse, Gulberg Greens

*- Architecture & Interior
Residential*

This residence demonstrates the relationship between volumes built around private courtyards and open spaces across the property. Using visual and tactile connections to create a sense of through and through accessibility, as well as curated fenestrations for light and landscape views.





DPL Office Islamabad

Interior
- Corporate / Office

The 3,700 sft office interior for the new HQ office for DPL in Islamabad is designed to support the brands Flat and Fun culture and Agile and Hybrid working.



The Bakery Cafe, Mardan

Interior *- Food & Beverage*

Mardans favorite cafe is designed to carefully blend local materials to curate a customer-centric experience that is culturally sensitive. Well-lit spaces adorned with natural materials welcome customers and can comfortably accommodate up to 50 people on each floor, in both private and semi-private seating arrangements.

The bakery serves as the main attraction on the ground floor. A restaurant with a live custom kitchen welcomes dine-in customers on the first floor, while the second floor has a dedicated rooftop barbecue area.



Jamia Masjid, Islamabad

Architecture & Interior *- Religious*

The site for the project is a 33 kanal plot in Phase III of DHA Islamabad as an amenity area fulfilling the requirement of up to 5000 worshippers for all events. The Jamia Masjid takes inspiration from the bounties of nature found our daily surroundings and is based on the garden of eternal bliss.

This perceived environment aims at inner peace and contentment found within spiritual and biophilic environments. Primary elements to instill this are water, fig trees, grape vines and olive trees that are planted within the built environment. The distance between the public realm and the spiritual space has been exaggerated by creating extended shaded walkways between them. An attempt has been made to weave nature within the built space to invoke the feelings of a spiritual realm.

The Jamia embraces minimalistic yet innovative approach of design by using only the spaces required. It aims to encourage educational and community involvement by creating multipurpose spaces such as isolated halls of different sizes and courtyards.





Horizon Hill Heights, DHA Islamabad

Architecture Residential

Horizon Hill Heights is a luxury midrise residential apartment building planned for DHA Phase 1 Rwp-Isl.

The project is conceived as 2 monolithic blocks housing 150 apartment units with shared amenities on ground and first floor and individual cores for the apartment levels with horizon to horizon views of the DHA ravine and beyond.

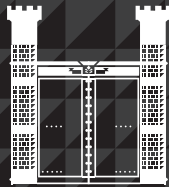
Spacious apartments have been designed as an alternative to the current market allocated square footage trends. They are designed for immediate occupancy rather than investment opportunities to create a thriving residential community complete with amenities such as gym, spa, parking, restaurant and a mart.

The splitting of the mass into 2 towers creates unique viewing opportunities with private decks and balconies overlooking the masterplan and beyond.

The interstitial space between the towers creates intimate landscape opportunities for the amenity floors below and balconies above.







ABDULLAH
KHAN
ARCHITECTS

Mobile: +92.308.888.0161

Email: abdullah@ak-architects.com

Website: www.ak-architects.com

Instagram: [ak_architects](https://www.instagram.com/ak_architects)